

Technical Data Sheet

InVivoSIM anti-human PD-L1 (Durvalumab Biosimilar)



Attention: Use of this product constitutes an agreement to Bio X Cell's Terms and Conditions which are included with this product in print and can also be found at <https://bioxcell.com/terms-and-conditions>.

Lot Specific Information

Lot Number: Lot Specific*
Volume: Lot Specific*
Concentration: Lot Specific* (generally 4 to 11 mg/ml) *
Total Protein: Lot Specific*

*This information will be noted on the certificate of analysis that ships with this product.

Product Information

| | |
|--|--|
| Catalog Number: | SIM0027 |
| Clone: | Durvalumab |
| Isotype: | Human IgG1, κ |
| Recommended Isotype Control(s): | RecombiMAb human IgG1 (LALA-PG) isotype control, anti-hen egg lysozyme |
| Recommended Dilution Buffer: | InVivoPure pH 7.0 Dilution Buffer |
| Mutations: | L234F/L235E/P331S |
| Immunogen: | Human PD-L1/B7-H1 |
| Reported Applications: | ELISA Flow Cytometry Western Blot Functional assays |
| Formulation: | PBS, pH 7.0 Contains no stabilizers or preservatives |
| Endotoxin: | <0.5EU/mg (<0.0005EU/ μ g) Determined by LAL gel clotting assay |
| Purity: | >95% Determined by SDS-PAGE |
| Sterility: | 0.2 μ m filtration |
| Production: | Purified from cell culture supernatant in an animal-free facility |
| Purification: | Protein A |
| Aggregation: | <5% Determined by SEC |
| RRID: | |
| Molecular Weight: | 150 kDa |

Murine Pathogen Test Results

Mouse Norovirus: Negative, Mouse Parvovirus: Negative, Mouse Minute Virus: Negative, Mouse Hepatitis Virus: Negative, Reovirus Screen: Negative, Lymphocytic Choriomeningitis virus: Negative, Lactate Dehydrogenase-Elevating Virus: Negative, Mouse Rotavirus: Negative, Theiler's Murine Encephalomyelitis: Negative, Ectromelia/Mousepox Virus: Negative, Hantavirus: Negative, Polyoma Virus: Negative, Mouse Adenovirus: Negative, Sendai Virus: Negative, Mycoplasma Pulmonis: Negative, Pneumonia Virus of Mice: Negative, Mouse Cytomegalovirus: Negative, K Virus: Negative

Description

This non-therapeutic biosimilar antibody uses the same variable regions from the therapeutic antibody Durvalumab making it ideal for research use. This Durvalumab biosimilar reacts with human PD-L1 (programmed death ligand 1) also known as B7-H1 or CD274. PD-L1 is a 40 kDa type I transmembrane protein that belongs to the B7 family of the Ig superfamily. PD-L1

is expressed on T lymphocytes, B lymphocytes, NK cells, dendritic cells, as well as IFN γ stimulated monocytes, epithelial cells and endothelial cells. PD-L1 binds to its receptor, PD-1, found on CD4 and CD8 thymocytes as well as activated T and B lymphocytes and myeloid cells. Engagement of PD-L1 with PD-1 leads to inhibition of TCR-mediated T cell proliferation and cytokine production. PD-L1 is thought to play an important role in tumor immune evasion. Induced PD-L1 expression is common in many tumors and results in increased resistance of tumor cells to CD8 T cell mediated lysis. Durvalumab blocks the interaction of PD-L1 with PD-1 and CD80.

Storage

Store at the stock concentration at 4°C . **Do not freeze.**

It is not uncommon for a floccule or precipitate to appear during storage. The floccule is typically buffer salts precipitating out of solution or a small bit of protein aggregation. For information on how to remove floccules or precipitates see our FAQ's at <https://bioxcell.com/faqs>.

Protocol Information

Since applications vary, each investigator should use the application references as a guide to help estimate the appropriate dose or concentration. The dose or concentration can be further optimized experimentally in a dose response or titration experiment.

Application References

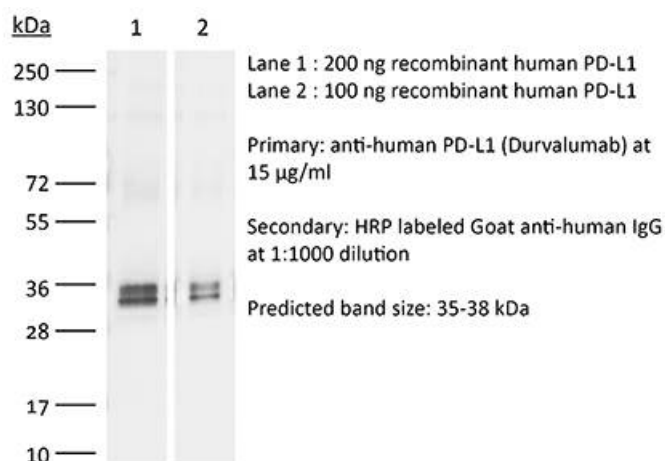
For a complete list of references, visit

https://bioxcell.com/sim0027?bxcs=9k1b3a#tab_references
or scan the QR code below.



Binding Validation

Validation data shown below confirms that this clone binds to its target antigen. For lot specific binding validation data, e-mail technicalservice@bioxcell.com.



Bio X Cell, LLC

<https://bioxcell.com>

+1-866-787-3444

customerservice@bioxcell.com

Conditions: For research use only. Not for human use. Not for use in diagnostic or therapeutic procedures.

Not for resale.

Bio X Cell, Bio X Cell logo, and all other trademarks are the property of Bio X Cell, LLC © 2025 Bio X Cell, LLC