

# Technical Data Sheet

RecombiMAb mouse IgG1 (D265A) isotype control, anti-hen egg lysozyme



**Attention:** Use of this product constitutes an agreement to Bio X Cell's Terms and Conditions which are included with this product in print and can also be found at <https://bioxcell.com/terms-and-conditions>.

## Lot Specific Information

Lot Number: Lot Specific\*  
Volume: Lot Specific\*  
Concentration: Lot Specific\* (generally 4 to 11 mg/ml) \*  
Total Protein: Lot Specific\*

\*This information will be noted on the certificate of analysis that ships with this product.

## Product Information

Catalog Number: CP047  
Clone: N/A  
Isotype: Mouse IgG1,  $\kappa$   
Recommended Dilution Buffer: InVivoPure pH 7.0 Dilution Buffer  
Mutations: D265A  
Immunogen: Hen egg lysozyme (HEL)  
Formulation: PBS, pH 7.0  
Contains no stabilizers or preservatives  
Endotoxin: <1EU/mg (<0.001EU/ $\mu$ g)  
Determined by LAL gel clotting assay  
Purity: >95%  
Determined by SDS-PAGE  
Sterility: 0.2  $\mu$ m filtration  
Production: Purified from CHO cell supernatant in an animal-free facility  
Purification: Protein G  
Aggregation: <5%  
Determined by SEC  
RRID:  
Molecular Weight: 150 kDa

## Murine Pathogen Test Results

Mouse Norovirus: Negative, Mouse Parvovirus: Negative, Mouse Minute Virus: Negative, Mouse Hepatitis Virus: Negative, Reovirus Screen: Negative, Lymphocytic Choriomeningitis virus: Negative, Lactate Dehydrogenase-Elevating Virus: Negative, Mouse Rotavirus: Negative, Theiler's Murine Encephalomyelitis: Negative, Ectromelia/Mousepox Virus: Negative, Hantavirus: Negative, Polyoma Virus: Negative, Mouse Adenovirus: Negative, Sendai Virus: Negative, Mycoplasma Pulmonis: Negative, Pneumonia Virus of Mice: Negative, Mouse Cytomegalovirus: Negative, K Virus: Negative

## Description

This mouse IgG1 isotype control antibody reacts with hen egg lysozyme and has low or no specific binding to any mouse sample. The D265A substitution has been shown to decrease effector functions by disrupting the Fc/Fc $\gamma$  receptor interface.

## Storage

Store at the stock concentration at 4°C. **Do not freeze.**

It is not uncommon for a floccule or precipitate to appear during storage. The floccule is typically buffer salts precipitating out of solution or a small bit of protein aggregation. For information on how to remove floccules or precipitates see our FAQ's at <https://bioxcell.com/faqs>.

## Protocol Information

Since applications vary, each investigator should use the application references as a guide to help estimate the appropriate dose or concentration. The dose or concentration can be further optimized experimentally in a dose response or titration experiment.

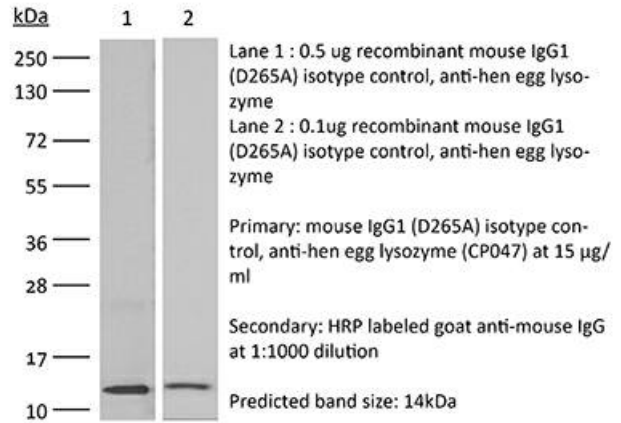
## Application References

For a complete list of references, visit [https://bioxcell.com/cp047?bxcs=9k1b3a#tab\\_references](https://bioxcell.com/cp047?bxcs=9k1b3a#tab_references) or scan the QR code below.



## Binding Validation

Validation data shown below confirms that this clone binds to its target antigen. For lot specific binding validation data, e-mail [technicalservice@bioxcell.com](mailto:technicalservice@bioxcell.com).



**Bio X Cell, LLC**  
<https://bioxcell.com>  
+1-866-787-3444  
[customerservice@bioxcell.com](mailto:customerservice@bioxcell.com)

*Conditions: For research use only. Not for use in diagnostic or therapeutic procedures.*

*Not for resale.*

**Bio X Cell, Bio X Cell logo, and all other trademarks are the property of Bio X Cell, LLC © 2024 Bio X Cell, LLC**